

CT-590/CT-591/CT-592

WAN Access Router

Features

Multiple options for WAN connection

Supports 10/100 Ethernet, T1/E1, and V.35 ports; enabling flexibility for WAN connection.

Economic and space efficient solutions

Provides software selectable ET1 or FE1 ports with built-in CSU/DSUs, with allows users to directly connect to an E1/T1 network, whilst saving the expense and space requirements of an external CSU/DSU.

Supports router and bridge mode

In bridge mode, the CT-59x supports IP/IPX transparent bridging, and spanning tree protocol (STP). in router mode, it supports default route, static route, and RIP v1/v2.

Supports most router mode functions

NAT/PAT, DHCP, DNS-Proxy, and home page redirect.

Easy to manage and maintain

Provides web-based management and an embedded SNMP agent to simply local and remote operations, and to simplify maintenance.

Firmware upgradeable

Provides configuration backup, restoration, and software downloading via TFTP.



Description

The CT-59x WAN Access Routers are ideal Leased Line solutions for multiple users at small/home offices, or remote/branch offices to provide high-speed data access.

For WAN connection, the CT-59x routers have different WAN interfaces. The CT-590 has one V.35 port, which can work with an external CSU/DSU for a Leased Line solution. The CT-591 has FT1/FE1 with a built-in CSU/DSU. It is a more economic and space efficient solution for users who require a T1/E1 connection. The CT-592 features one 10/100 Base-T auto-negotiation Ethernet WAN port; and either dual FT1/FE1 ports with built-in DSU/CSUs, or dual V.35 serial ports that transmit at speeds of up to 10 Mbps. These options are software selectable, the device to be used for a wide range of applications.

For LAN connection, the CT-590 and CT-591 have one 10/100 Ethernet port, while the CT-592 has up to seven 10/100 Base-T switched Ethernet ports, which saves the expense and space of installing external equipment.

All CT-59x routers support functions such as NAT, PAT and DHCP to ensure security and efficiency of your company's network.

Specifications

Interfaces

- WAN Interface CT-590: V.35 X1
CT-591: FT1/FE1 X1
CT-592: 10/100 Ethernet X1 and either V.35 X2 or FT1/FE1 X2
- LAN Interface CT-590, CT-591: 10/100 Ethernet X1
CT-592: 10/100 Ethernet X7 (switched)

Standards

- IEEE 802.1d Spanning Tree Protocol
- IEEE 802.3 Ethernet
- IEEE 802.3u Fast Ethernet
- RFC 1213 SNMP MIB-II
- RFC 1508 RIP v1
- RFC 1723 RIP v2

Management

- Console, Web-based, SNMP, and Telnet
- Configuration backup, restoration, and software download via TFTP

Bridge Functions

- IP/IPX transparent bridging, spanning tree

Router Functions

- PPP, IP static route, RIP v1/v2, DHCP, ARP, NAT/PAT, DNS-Proxy

Power Supply

- CT-590, CT-591: 110/220 VAC
- CT-592: 110/220 VAC or 48 VDC (Ordering option)

Environmental Requirements

- Operating Temperature 0 to 50 degrees Celsius
- Relative Humidity 5% to 90% (non-condensing)

Dimensions

- CT-590, CT-591: 242mm (W)x 60mm (H)x 167mm (D)
- CT-592: 432mm (W)x 44.5mm (H)x 222mm (D)

Weight

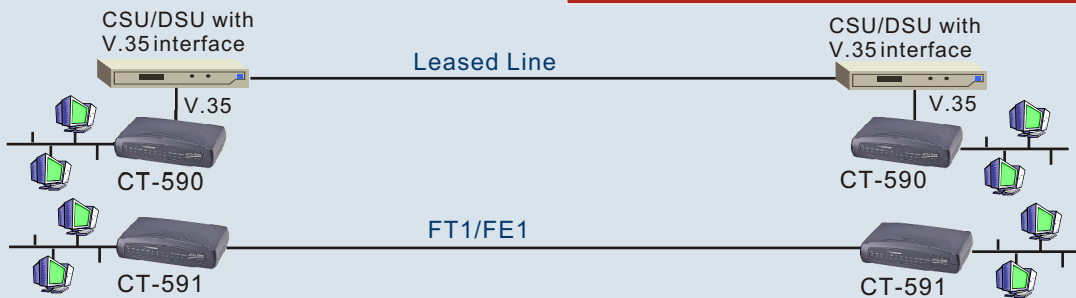
- CT-590, CT-591: 1.1 Kg (with power adapter)
- CT-592: 3.6 Kg (with AC power option)/
3.48 Kg (with DC Power option)

Specifications subject to change without notice

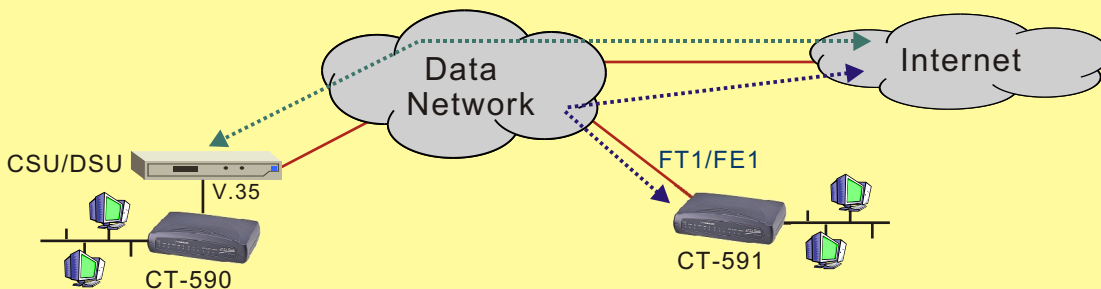
CT-590/CT-591/CT-592 WAN Access Router

Application Diagram

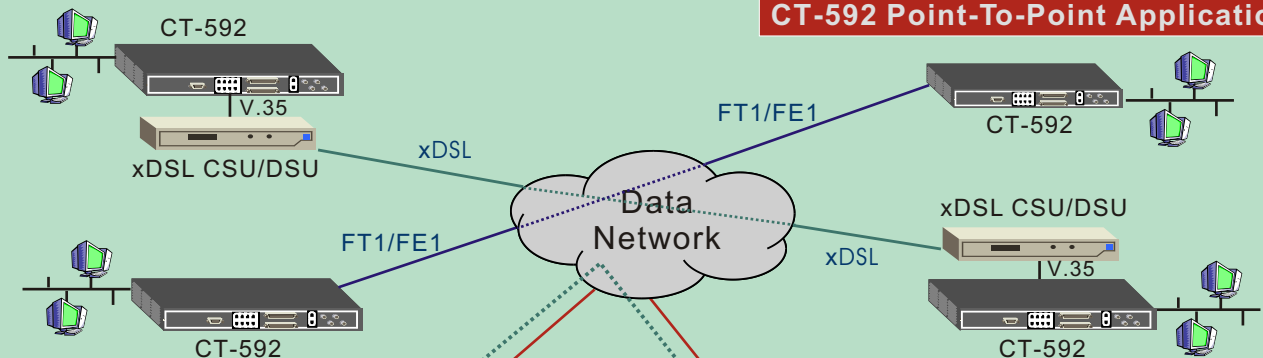
CT-590/CT-591 Point-TO-Point Applications



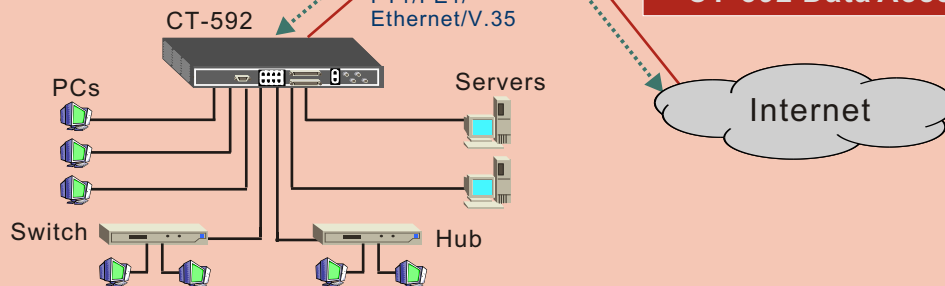
CT-590/CT-591 Data Access Applications



CT-592 Point-To-Point Applications



CT-592 Data Access Applications



The CT-590 has one V.35 port. It can operate with an external CSU/DSU to provide a Leased Line solution. The CT-591 offers a FT1 or FE1 port (software selectable). This enables customers to perform data access via a T1/E1 network. The CT-592 supports multiple WAN interfaces: one Ethernet port and either dual FT1/FE1 or dual V.35 ports, which enables the device to be used for a wide range of applications.



COMTREND CORPORATION

3F-1, 10 Lane 609, Chung Hsin Rd., Sec.5, San Chung, Taipei Hsien, Taiwan 241
 Tel: 886-2-29998261 Fax: 886-2-29998497 E-mail: sales@comtrendcorp.com
<http://www.comtrendcorp.com>

